

EDMUND QUINCY

My name is Edmund Quincy
And once Fishtoft was my home
But in 1633

To America did roam,
With Puritan John Cotton
To join those who'd gone before
And though I died 3 years on
My story runs on much more.
My descendants have been busy
And had a huge part to play
Not least John,

then John Quincy Adams
The 2nd and 6th Presidents
of the grand old U.S. of A.



So take the
Pilgrim Walk
with me.

Though creeks
and river have
changed today.

You will feel the
special aura.

Those first dissenters
felt in yesterday.

If up hill, down dale is not your favourite thing
Try this gentle walk to make your heart sing.
With weather often dry and bright
And winds gently light
Enjoy this walk in Summer, Autumn, Winter or Spring



BARN OWL

The evening swoop of an Owl
Black tipped ears of a running Hare
The soaring glide of a Marsh Harrier
All things you may see around here



HARE



Grasses in myriad shades of green and blue
With seed heads of gray to pinkish hue
Those that play tickle on your shins
While other compete to brush your chin.



April to July may be a good time to go
While Autumn jewels are blackberries,
rose hips and sloe

Those now called Pilgrim Fathers
To Scotia Creek they came to sail
But ended up in Guildhall Gaol.
Religion was their prime import
Freedom of method what they sought
Men, women, children, all they had
First to Holland, then America, they fled.

STARTING POINT
- CAR PARK -

From Car Park turn left through
single gate and along river bank

PILGRIM
FATHERS
MEMORIAL

Coastguards lived in these cottages
and helped ships that were floundering
They also had another task -
employed to stop any smuggling.

FISHTOFT PUMPING STATION

This type FW3/22 Pillbox built in World War II
was very cramped and spartan, housing just a few
to look out for invaders coming into view.
The one on Frampton Marsh just across the river is
now buried in the Sea Bank and lost from view forever.



OYSTER CATCHER

Turn left at sign by fence
Turn right onto gravel lane
Turn left at sign to Hobhole



Potatoes, wheat and sprouts
Now grow on these silt rich fields
Once salt marsh and creeks
Rich with wildfowl, fish and eels.



RINGLET

Built in 1948 with Nunn's Bridge as it's name
A modest simple span with a special claim to fame.
This prestressed concrete structure is, so it is written,
The very first, in situ, ever built in Britain.



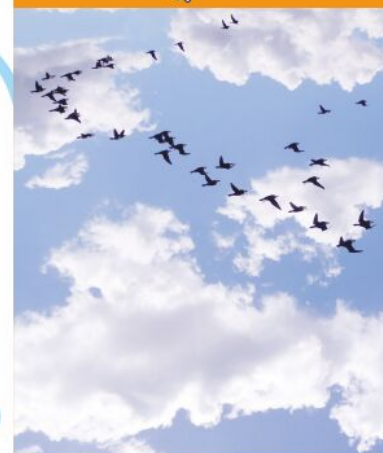
NUNN'S BRIDGE



BEE ORCHID

Over 13 miles away was an often flooded fen
So in 1802 came the Navigator Man
With simple spades and barrows they dug deep and fine
While following the clever John Rennie design
To create this amazing drain, long and straight
Now no longer are wet feet, those fen residents fate.

Sponsored by HERITAGE FUND



OS EXPLORER 261 LANDRANGER 131

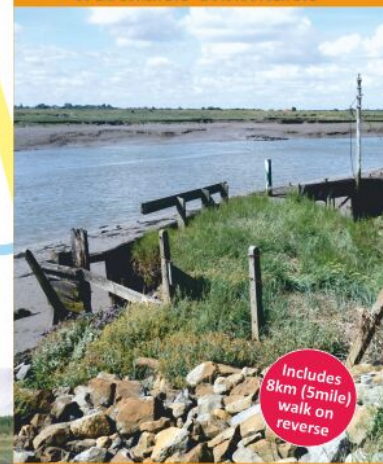
Pilgrims Walk

Fishtoft

Boston | Lincolnshire | PE21 0SH

Pilgrims Walk

OS EXPLORER 261 LANDRANGER 131



Includes
8km (5mile)
walk on
reverse

Sponsored by HERITAGE FUND